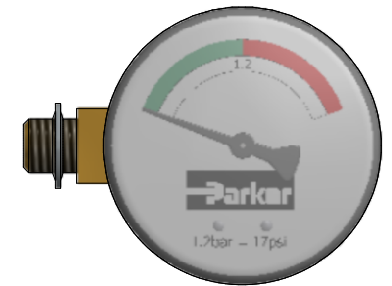


2045002001



2045012065



FMUU2VBMM10L



2045007012



FMUG1EBPM10L

Code: see table  
 Material: housing: Plastic (black) / fitting: Brass acc. ISO 197  
 Material code: ABS / CuZn39Pb3 (2.0201)

- Note, unless stated otherwise:
- Connection M10
  - Temperature range -20 to 60°C
  - Scale span = 3x pressure setting
  - Tolerance acc. ISO 2768-cK
  - All gauges to conform acc. EN837-1, class 4
  - Add mechanical absorption to all models

Parts List			
ITEM	QTY	PART NUMBER	DESCRIPTION
1	1	See table	Pressure gauge
2	1	81.12.015.10	Bonded seal

Item number	Type	Scale total	Setting pressure	MAX deviation across gauge
2045002001	VM	-0,5 / 0	-0,15 bar = -2 psi	± 0,04
FMUU2VBMM10L	VM	-1 / 0	-0,3 bar = -4 psi	± 0,04
2045007012	PM	0 / 2,5	0,7 bar = 10 psi	± 0,1
FMUG1EBPM10L	PM	0 / 4	1,2 bar = 17 psi	± 0,16
2045012065	PMZ	0 / 4	1,2 bar = 17 psi	± 0,16

A	1522140	28-10-2014	PS
Rev.	ECO ref.	Date	Eng.

SE MAT QA CZ PROD		<b>Pressure gauges</b> See table	NOTE This document contains proprietary information and is submitted in confidence and subject to return upon request and upon the condition that the information contained herein will not be used in any way detrimental to the interest of Parker Filtration BV	Drawn: PS	Date: 28-10-2014	
				Filter Division Europe Arnhem - Holland Tel. +31(0)26 - 376 03 76	Appr: PW	Date: 28-10-2014
			Part only: For not indicated tolerances see QAD-W-ENGE08	Scale: 1:1 Sheet: 1 of 1	Drawing no.	Rev.
A3		212.00.034.01	A			